

HIGHLIGHTS OF PRESCRIBING INFORMATION

These highlights do not include all the information needed to use TESTOSTERONE CYPIONATE INJECTION safely and effectively. See full prescribing information for TESTOSTERONE CYPIONATE INJECTION.

TESTOSTERONE CYPIONATE injection, for intramuscular use, CIII
Initial U.S. Approval: Prior to Jan 1, 1982

INDICATIONS AND USAGE

Testosterone Cypionate Injection is an androgen indicated for testosterone replacement therapy in males for conditions associated with a deficiency or absence of endogenous testosterone (1).

Limitations of Use:

- Safety and efficacy of Testosterone Cypionate Injection in men with “age-related hypogonadism” (also referred to as “late-onset hypogonadism”) have not been established (1).
- Safety and effectiveness in pediatric patients below the age of 12 years have not been established (8.4).

DOSAGE AND ADMINISTRATION

- Injectable testosterone products may have different doses, strengths, or administration instructions and they are not substitutable on a milligram-per-milligram basis. Administer Testosterone Cypionate Injection by deep gluteal intramuscular injection only (2.1).
- Prior to initiating Testosterone Cypionate Injection, confirm the diagnosis of hypogonadism by ensuring that serum testosterone concentrations have been measured in the morning on at least two separate days and that these serum concentrations are below the normal range (2.2).
- Recommended dosage is 50 mg to 400 mg administered every two to four weeks as a deep intramuscular injection in the gluteal muscle. Individualize the dose and schedule based on the patient’s age, diagnosis, response to treatment, and the appearance of adverse reactions (2.3).

DOSAGE FORMS AND STRENGTHS

Injection: 200 mg/mL in a single-dose vial (3)

CONTRAINDICATIONS

- Known hypersensitivity to Testosterone Cypionate Injection or any of its components, skin manifestations and anaphylactoid reactions have been reported (4)
- Men with carcinoma of the breast or known or suspected carcinoma of the prostate (4).
- Women who are pregnant. Testosterone may cause fetal harm (4).

WARNINGS AND PRECAUTIONS

- **Polycythemia:** Monitor hematocrit periodically during treatment. Discontinue Testosterone Cypionate Injection, if necessary (5.1).
- **Cardiovascular Risk:** Testosterone Cypionate Injection may increase the risk of major adverse cardiovascular events (MACE). Inform patients of this risk when deciding whether to use or to continue treatment (5.2).
- **Worsening of Benign Prostatic Hyperplasia (BPH) and Potential Risk of Prostate Cancer:** Monitor patients with benign prostatic hyperplasia (BPH) for

worsening of signs and symptoms of BPH. Evaluate patients for prostate cancer, including monitoring prostate specific antigen (PSA) prior to initiating and during treatment with androgens (5.3).

- **Venous thromboembolism (VTE):** VTE, including deep vein thrombosis (DVT) and pulmonary embolism (PE) have been reported in patients using testosterone products. Discontinue Testosterone Cypionate Injection if VTE is suspected and initiate appropriate workup and management (5.4).
- **Abuse of Testosterone and Monitoring of Serum Testosterone:** If testosterone use at doses higher than recommended for the approved indication and in combination with other anabolic androgenic steroids is suspected, check serum testosterone concentration (5.5).
- **Potential for Adverse Effects on Spermatogenesis:** Testosterone Cypionate Injection may cause azoospermia (5.7, 8.3).
- **Edema:** Edema, with or without congestive heart failure (CHF), may occur in patients with pre-existing cardiac, renal, or hepatic disease. Discontinue Testosterone Cypionate Injection and initiate appropriate workup (5.9).
- **Sleep Apnea:** Testosterone Cypionate Injection may potentiate sleep apnea in those with risk factors (5.10).
- **Lipid Changes:** Testosterone may affect serum lipid profile. Monitor patient lipid concentrations; if necessary, adjust dosage of lipid lowering drug(s) or discontinue Testosterone Cypionate Injection (5.12).
- **Adverse Effects on Bone Maturation:** Testosterone may result in acceleration of bone age and premature closure of epiphyses in pediatric patients which may result in compromised adult stature. Monitor the effect on bone maturation by assessing bone age of the wrist and hand every 6 months.

ADVERSE REACTIONS

Common adverse reactions (incidence $\geq 4\%$) are injection site erythema and injection site reaction (6.1).

Other adverse reactions include: polycythemia, gynecomastia, headache, and depression (6.2).

To report SUSPECTED ADVERSE REACTIONS, contact Slayback Pharma at 1-844-566-2505 or FDA at 1-800-FDA-1088 or www.fda.gov/medwatch

DRUG INTERACTIONS

- **Insulin:** In patients with diabetes, concomitant use with Testosterone Cypionate Injection may decrease blood glucose and insulin requirements (7.1).
- **Oral Anticoagulants:** Concomitant use with Testosterone Cypionate Injection may cause changes in anticoagulant activity. Monitor International Normalized Ratio and prothrombin time frequently (7.2).
- **Corticosteroids:** Concomitant use with Testosterone Cypionate Injection may result in increased fluid retention. Use with caution, particularly in patients with cardiac, renal, or hepatic disease (7.3).

USE IN SPECIFIC POPULATIONS

Geriatric Patients: Geriatric patients treated with androgens may also be at risk for worsening of signs and symptoms of BPH and prostatic carcinoma (8.5).

See 17 for PATIENT COUNSELING INFORMATION.

Revised: 6/2022

FULL PRESCRIBING INFORMATION: CONTENTS*

1 INDICATIONS AND USAGE

2 DOSAGE AND ADMINISTRATION

- 2.1 Important Dosage Information
- 2.2 Confirmation of Hypogonadism before Initiation of Testosterone Cypionate
- 2.3 Recommended Dosage and Administration

3 DOSAGE FORMS AND STRENGTHS

4 CONTRAINDICATIONS

5 WARNINGS AND PRECAUTIONS

- 5.1 Polycythemia
- 5.2 Cardiovascular Risk
- 5.3 Worsening of BPH and Potential Risk of Prostate Cancer
- 5.4 Venous Thromboembolism
- 5.5 Abuse of Testosterone and Monitoring of Serum Testosterone Concentrations
- 5.6 Not for Use in Women
- 5.7 Potential for Adverse Effects on Spermatogenesis
- 5.8 Hepatic Adverse Effects
- 5.9 Edema
- 5.10 Sleep Apnea
- 5.11 Gynecomastia
- 5.12 Lipid Changes
- 5.13 Hypercalcemia
- 5.14 Decreased Thyroxine-binding Globulin
- 5.15 Increases in Prolactin
- 5.16 Adverse Effects on Bone Maturation

6 ADVERSE REACTIONS

- 6.1 Clinical Trial Experience

- 6.2 Other Adverse Reactions

7 DRUG INTERACTIONS

- 7.1 Insulin
- 7.2 Oral Anticoagulants
- 7.3 Corticosteroids

8 USE IN SPECIFIC POPULATIONS

- 8.1 Pregnancy
- 8.2 Lactation
- 8.3 Females and Males of Reproductive Potential
- 8.4 Pediatric Use
- 8.5 Geriatric Use

9 DRUG ABUSE AND DEPENDENCE

- 9.1 Controlled Substance
- 9.2 Abuse
- 9.3 Dependence

10 OVERDOSAGE

11 DESCRIPTION

12 CLINICAL PHARMACOLOGY

- 12.1 Mechanism of Action
- 12.2 Pharmacodynamics
- 12.3 Pharmacokinetics

13 NONCLINICAL TOXICOLOGY

- 13.1 Carcinogenesis, Mutagenesis, Impairment of Fertility

16 HOW SUPPLIED/STORAGE AND HANDLING

17 PATIENT COUNSELING INFORMATION

*Sections or subsections omitted from the full prescribing information are not listed.

FULL PRESCRIBING INFORMATION

1. INDICATIONS AND USAGE

Testosterone Cypionate Injection is indicated for testosterone replacement therapy in males in conditions associated with a deficiency or absence of endogenous testosterone:

- Primary hypogonadism (congenital or acquired): testicular failure due to conditions such as cryptorchidism, bilateral torsion, orchitis, vanishing testis syndrome; or orchiectomy, Klinefelter’s syndrome, or toxic damage from alcohol or heavy metals, chemotherapy, or toxic damage from alcohol or heavy metals. These men usually have low serum testosterone concentrations and gonadotropins (follicle stimulating hormone (FSH), luteinizing hormone (LH)) above the normal range [*see Dosage and Administration (2.2)*].
- Hypogonadotropic hypogonadism (congenital or acquired): gonadotropin or luteinizing hormone-releasing hormone (LHRH) deficiency, or pituitary-hypothalamic injury from tumors, trauma, or radiation. These men have low testosterone serum concentrations but have gonadotropins in the normal or low range [*see Dosage and Administration (2.2)*].

Limitations of Use

- Safety and efficacy of Testosterone Cypionate Injection in men with “age- related hypogonadism” (also referred to as “late-onset hypogonadism”) have not been established.
- Safety and efficacy of Testosterone Cypionate Injection in pediatric patients below the age of 12 years have not been established [*see Use in Specific Populations (8.4)*].

2. DOSAGE AND ADMINISTRATION

2.1 Important Dosage Information

- Injectable testosterone products may have different doses, strengths, or administration instructions and they are not substitutable on a milligram-per-milligram basis.
- Administer Testosterone Cypionate Injection by deep gluteal intramuscular injection only.

2.2 Confirmation of Hypogonadism before Initiation of Testosterone Cypionate

Prior to initiating Testosterone Cypionate Injection, confirm the diagnosis of hypogonadism by ensuring that serum testosterone concentrations have been measured in the morning on at least two separate days and that these serum testosterone concentrations are below the normal range.

2.3 Recommended Dosage and Administration

The recommended dosage of Testosterone Cypionate Injection is 50 mg to 400 mg administered every two to four weeks as a deep intramuscular injection in the gluteal muscle.

Individualize the dose and schedule of Testosterone Cypionate Injection based on the patient’s age, diagnosis, response to treatment, and the appearance of adverse reactions.

Visually inspect parenteral drug products for particulate matter and discoloration prior to administration, whenever solution and container permit. Discard any unused portions of drug remaining in the single-dose vial.

3. DOSAGE FORMS AND STRENGTHS

Injection: 200 mg/mL available as 1 mL of clear colorless to pale yellow solution filled in a single-dose glass vial.

4. CONTRAINDICATIONS

Testosterone Cypionate Injection is contraindicated in:

- Known hypersensitivity to Testosterone Cypionate Injection or to any of its components [*see Description (11)*]. Hypersensitivity, including skin manifestations and anaphylactoid reactions have been reported [*see Adverse Reactions (6.2)*].
- Men with carcinoma of the breast or known or suspected carcinoma of the prostate gland [*see Warnings and Precautions (5.2)*].
- Women who are pregnant. Testosterone can cause virilization of the female fetus when administered to a pregnant woman [*see Use in Specific Populations (8.1)*].

5. WARNINGS AND PRECAUTIONS

5.1 Polycythemia

Increases in hematocrit levels, reflective of increases in red blood cell mass, may require discontinuation of Testosterone Cypionate Injection. Check that hematocrit is not elevated prior to initiating Testosterone Cypionate Injection. Periodically monitor hematocrit levels during treatment. If hematocrit becomes elevated, stop Testosterone Cypionate Injection until hematocrit decreases to an acceptable concentration. If Testosterone Cypionate Injection is restarted and again causes hematocrit to become elevated, stop Testosterone Cypionate Injection permanently. An increase in red blood cell mass may increase the risk of thromboembolic events [*see Warnings and Precautions (5.4)*].

5.2 Cardiovascular Risk

Long term clinical safety trials have not been conducted to assess the cardiovascular outcomes of testosterone replacement therapy in men. To date, epidemiologic studies and randomized controlled trials have been inconclusive for determining the risk of major adverse cardiovascular events (MACE), such as non-fatal myocardial infarction, non-fatal stroke, and cardiovascular death, with the use of testosterone compared to non-use. Some studies, but not all, have reported an increased risk of MACE in association with use of testosterone replacement therapy in men. Inform patients of this possible risk when deciding whether to use or to continue Testosterone Cypionate Injection.

5.3 Worsening of Benign Prostatic Hyperplasia (BPH) and Potential Risk of Prostate Cancer

- Patients with BPH treated with androgens are at an increased risk for worsening of signs and symptoms of BPH. Monitor patients with BPH for worsening signs and symptoms.
- Patients treated with androgens may be at increased risk for prostate cancer. Evaluate patients for prostate cancer prior to initiating and during treatment with androgens [*see Contraindications (4)*].

5.4 Venous Thromboembolism (VTE)

There have been postmarketing reports of venous thromboembolic events, including deep vein thrombosis (DVT) and pulmonary embolism (PE), in patients using testosterone replacement products, such as testosterone cypionate. Evaluate patients who report symptoms of pain, edema, warmth and erythema in the lower extremity for DVT and those who present with acute shortness of breath for PE. If a venous thromboembolic event is suspected, discontinue treatment with testosterone cypionate and initiate appropriate workup and management [see *Adverse Reactions (6.2)*].

5.5 Abuse of Testosterone and Monitoring of Serum Testosterone Concentrations

Testosterone has been subject to abuse, typically at doses higher than recommended for the approved indication and in combination with other anabolic androgenic steroids. Anabolic androgenic steroid abuse can lead to serious cardiovascular and psychiatric adverse reactions [see *Drug Abuse And Dependence (9)*].

If testosterone abuse is suspected, check serum testosterone concentrations to ensure they are within therapeutic range. However, testosterone levels may be in the normal or subnormal range in men abusing synthetic testosterone derivatives. Counsel patients concerning the serious adverse reactions associated with abuse of testosterone and anabolic androgenic steroids. Conversely, consider the possibility of testosterone and anabolic androgenic steroid abuse in suspected patients who present with serious cardiovascular or psychiatric adverse events.

5.6 Not for Use in Women

Due to lack of controlled studies in women and the potential for virilizing effects, Testosterone Cypionate Injection is not indicated for use in women [see *Use in Specific Populations (8.1, 8.2)*].

5.7 Potential for Adverse Effects on Spermatogenesis

With large doses of exogenous androgens, including Testosterone Cypionate Injection, spermatogenesis may be suppressed through feedback inhibition of pituitary follicle-stimulating hormone (FSH) possibly leading to adverse effects on semen parameters including sperm count [see *Use in Specific Populations (8.3) and Adverse Reactions (6.2)*]. Patients should be informed of this possible risk when deciding whether to use or to continue to use Testosterone Cypionate Injection.

5.8 Hepatic Adverse Effects

Prolonged use of high doses of orally active 17-alpha-alkyl androgens (e.g., methyltestosterone) has been associated with serious hepatic adverse effects (peliosis hepatis, hepatic neoplasms, cholestatic hepatitis, and jaundice). Peliosis hepatis can be a life-threatening or fatal complication. Long-term therapy with intramuscular testosterone enanthate has produced multiple hepatic adenomas.

Testosterone Cypionate Injection is not a 17 alpha-alkyl androgen and is not known to produce hepatic adverse effects associated with 17-alpha-alkyl androgens.

Nonetheless, patients should be instructed to report any signs or symptoms of hepatic dysfunction (e.g., jaundice). If these occur, promptly discontinue Testosterone Cypionate Injection while the cause is evaluated.

5.9 Edema

Androgens, including Testosterone Cypionate Injection, may promote retention of sodium and water. Edema, with or without congestive heart failure, may be a serious complication in patients with pre-existing cardiac, renal or hepatic disease [see *Adverse Reactions (6.2)*]. In addition to

discontinuation of the drug, appropriate work up and management of edema may be required.

5.10 Sleep Apnea

The treatment of hypogonadal men with testosterone products may potentiate sleep apnea in some patients, especially those with risk factors such as obesity or chronic lung diseases.

5.11 Gynecomastia

Gynecomastia may develop and occasionally persists in patients being treated for hypogonadism.

5.12 Lipid Changes

Changes in serum lipid profile may require dose adjustment of lipid lowering drugs or discontinuation of testosterone therapy. Monitor the lipid profile periodically after starting testosterone therapy.

5.13 Hypercalcemia

Androgens, including Testosterone Cypionate Injection, should be used with caution in cancer patients at risk of hypercalcemia (and associated hypercalciuria). Monitor serum calcium concentrations periodically in these patients.

5.14 Decreased Thyroxine-binding Globulin

Androgens, including Testosterone Cypionate Injection, may decrease concentrations of thyroxine-binding globulin, resulting in decreased total T₄ serum levels and increased resin uptake of T₃ and T₄. Free thyroid hormone levels remain unchanged, however, and there is no clinical evidence of thyroid dysfunction.

5.15 Increases in Prolactin

Increases in serum prolactin have been reported in patients treated with testosterone products, such as Testosterone Cypionate Injection. Evaluate serum prolactin levels prior to initiating treatment with Testosterone Cypionate Injection. Re-evaluate serum prolactin levels 3 to 4 months after starting treatment. If serum prolactin remains elevated, discontinue Testosterone Cypionate Injection.

5.16 Adverse Effects on Bone Maturation

Testosterone use may result in acceleration of bone age and premature closure of epiphyses in pediatric patients. This adverse effect may result in compromised adult stature. The younger the pediatric patient the greater the risk of compromising final mature height. Monitor the effect on bone maturation by assessing bone age of the wrist and hand every 6 months.

6. ADVERSE REACTIONS

The following clinically significant adverse reactions are discussed elsewhere in the labeling:

- Polycythemia [*see Warnings and Precautions (5.1)*]
- Cardiovascular Risk [*see Warnings and Precautions (5.2)*]
- Worsening of Benign Prostatic Hyperplasia (BPH) and Potential Risk of Prostate Cancer [*see Warnings and Precautions (5.3)*]
- Venous Thromboembolism [*see Warnings and Precautions (5.4)*]

- Hepatic Adverse Effects [see Warnings and Precautions (5.8)]
- Edema [see Warnings and Precautions (5.9)]
- Sleep Apnea [see Warnings and Precautions (5.10)]
- Gynecomastia [see Warnings and Precautions (5.11)]
- Lipid Changes [see Warnings and Precautions (5.12)]
- Hypercalcemia [see Warnings and Precautions (5.13)]
- Decreased Thyroxine-binding Globulin [see Warnings and Precautions (5.14)]
- Increases in Prolactin [see Warnings and Precautions (5.15)]
- Adverse Effects on Bone Maturation [see Warnings and Precautions (5.16)]

6.1 Clinical Trial Experience

Because clinical trials are conducted under widely varying conditions, adverse reaction rates observed in the clinical trials of a drug cannot be directly compared to rates in the clinical trials of another drug and may not reflect the rates observed in practice.

The safety of Testosterone Cypionate Injection was evaluated, in Study 1, a randomized, single-dose, open-label study conducted in 27 adult males with hypogonadism. Patients were 18 to 65 years of age with a body mass index of 18 to 35 kg/m². Patients received a single intramuscular dose Testosterone Cypionate Injection 200 mg or comparator intramuscular testosterone replacement therapy product and were observed for adverse reactions and injection site reactions over 31 days.

The most common adverse reactions in patients who received Testosterone Cypionate Injection were injection site erythema (26%) and injection site reaction (4%). All cases of injection site erythema and injection site reaction were categorized as mild based on a pre-defined injection site assessment scale that defined injection site reactions as mild if they were slight or barely perceptible.

6.2 Other Adverse Reactions

The following adverse reactions associated with the use of testosterone were identified in clinical studies or postmarketing reports. Because some of these reactions were reported voluntarily from a population of uncertain size, it is not always possible to reliably estimate their frequency or establish a causal relationship to drug exposure.

Administration site reactions: Inflammation and pain at the site of intramuscular injection.

Allergic: Hypersensitivity, including skin manifestations and anaphylactoid reactions.

Cardiovascular disorders: myocardial infarction, stroke.

Endocrine and urogenital: Gynecomastia, premature closure of bony epiphyses with termination of growth, precocious puberty.

Fluid and electrolyte disturbances: Retention of sodium, chloride, water, potassium, calcium, and inorganic phosphates.

Gastrointestinal: Nausea, cholestatic jaundice, alterations in liver function tests, rarely hepatocellular

neoplasms and peliosis hepatis.

Hematologic: Suppression of clotting factors II, V, VII, and X, bleeding in patients on concomitant anticoagulant therapy, and polycythemia.

Nervous system: Increased or decreased libido, headache, anxiety, depression, and generalized paresthesia.

Reproductive system: Excessive frequency and duration of penile erections, oligospermia, and priapism

Vascular disorders: Venous thromboembolism.

Skin and appendages: Male pattern baldness, seborrhea, and acne.

Special senses: Rare cases of central serous chorioretinopathy (CSCR).

7. DRUG INTERACTIONS

7.1 Insulin

Changes in insulin sensitivity or glycemic control may occur in patients treated with androgens. In diabetic patients, the metabolic effects of androgens may decrease blood glucose and, therefore, insulin requirements.

7.2 Oral anticoagulants

Changes in anticoagulant activity may be seen with androgens. Frequent monitoring of INR and prothrombin time may be necessary in patients taking anticoagulants, especially at the initiation and termination of androgen therapy.

7.3 Corticosteroids

The concurrent use of testosterone with corticosteroids may result in increased fluid retention and should be monitored cautiously, particularly in patients with cardiac, renal or hepatic disease.

8. USE IN SPECIFIC POPULATIONS

8.1 Pregnancy

Risk Summary

Testosterone Cypionate Injection is contraindicated in pregnant women and not indicated for use in females [see *Contraindications (4)*]. Testosterone is teratogenic and may cause fetal harm when administered to a pregnant woman based on data from animal studies (see *Data*) and its mechanism of action [see *Clinical Pharmacology (12.1)*]. Exposure of a female fetus to androgens may result in varying degrees of virilization. In animal developmental studies, exposure to testosterone in utero resulted in hormonal and behavioral changes in offspring and structural impairments of reproductive tissues in female and male offspring. These studies did not meet current standards for nonclinical development toxicity studies.

Data

Animal Data

In developmental studies conducted in rats, rabbits, pigs, sheep and rhesus monkeys, pregnant animals received intramuscular injection of testosterone during the period of organogenesis. Testosterone treatment at doses that were comparable to those used for testosterone replacement therapy resulted in structural impairments in both female and male offspring. Structural impairments observed in females included increased anogenital distance, phallus development, empty scrotum, no external vagina, intrauterine growth retardation, reduced ovarian reserve, and increased ovarian follicular recruitment. Structural impairments seen in male offspring included increased testicular weight, larger seminal tubular lumen diameter, and higher frequency of occluded tubule lumen. Increased pituitary weight was seen in both sexes.

Testosterone exposure in utero also resulted in hormonal and behavioral changes in offspring. Hypertension was observed in pregnant females and offspring in rats exposed to doses approximately twice those used for testosterone replacement therapy.

8.2 Lactation

Risk Summary

Testosterone Cypionate Injection is not indicated for use in females.

8.3 Females and Males of Reproductive Potential

Infertility

Males

During treatment with large doses of exogenous androgens, including testosterone cypionate injection, spermatogenesis may be suppressed through feedback inhibition of the hypothalamic-pituitary-testicular-axis [see *Warnings and Precautions (5.7)*]. Reduced fertility is observed in some men taking testosterone replacement therapy. The impact on fertility may be irreversible. Testicular atrophy, subfertility, and infertility have also been reported in men who abuse anabolic androgenic steroids [see *Drug Abuse and Dependence (9.2)*].

8.4 Pediatric Use

Improper use may result in acceleration of bone age and premature closure of epiphyses. The effect on bone maturation should be monitored by assessing bone age of the wrist and hand every 6 months. In children, androgen treatment may accelerate bone maturation without producing compensatory gain in linear growth. This adverse effect may result in compromised adult stature. The younger the child the greater the risk of compromising final mature height. Precocious puberty has also been reported with use of testosterone.

The safety and effectiveness of Testosterone Cypionate Injection have not been established in pediatric patients young than 12 years of age.

8.5 Geriatric Use

Geriatric patients treated with androgens may be at an increased risk of developing BPH and prostatic carcinoma [see *Warnings and Precautions (5.3)*].

9. DRUG ABUSE AND DEPENDENCE

9.1 Controlled Substance

Testosterone Cypionate Injection contains testosterone, a Schedule III controlled substance.

9.2 Abuse

Drug abuse is intentional non-therapeutic use of a drug, even once, for its rewarding psychological and physiological effects. Abuse and misuse of testosterone are seen in male and female adults and adolescents. Testosterone, often in combination with other anabolic androgenic steroids (AAS), and not obtained by prescription through a pharmacy, may be abused by athletes and bodybuilders. There have been reports of misuse by men taking higher doses of legally obtained testosterone than prescribed and continuing testosterone despite adverse events or against medical advice.

Abuse-Related Adverse Reactions

Serious adverse reactions have been reported in individuals who abuse anabolic androgenic steroids, and include cardiac arrest, myocardial infarction, hypertrophic cardiomyopathy, congestive heart failure, cerebrovascular accident, hepatotoxicity, and serious psychiatric manifestations, including major depression, mania, paranoia, psychosis, delusions, hallucinations, hostility, and aggression.

The following adverse reactions have also been reported in men: transient ischemic attacks, convulsions, hypomania, irritability, dyslipidemias, testicular atrophy, subfertility, and infertility.

The following additional adverse reactions have been reported in women: hirsutism, virilization, deepening of voice, clitoral enlargement, breast atrophy, male-pattern baldness, and menstrual irregularities.

The following adverse reactions have been reported in male and female adolescents: premature closure of bony epiphyses with termination of growth, and precocious puberty.

Because these reactions are reported voluntarily from a population of uncertain size and may include abuse of other agents, it is not always possible to reliably estimate their frequency or establish a causal relationship to drug exposure.

9.3 Dependence

Behaviors Associated with Addiction

Continued abuse of testosterone and other anabolic steroids, leading to addiction is characterized by the following behaviors:

- Taking greater dosages than prescribed
- Continued drug use despite medical and social problems due to drug use
- Spending significant time to obtain the drug when supplies of the drug are interrupted
- Giving a higher priority to drug use than other obligations
- Having difficulty in discontinuing the drug despite desires and attempts to do so
- Experiencing withdrawal symptoms upon abrupt discontinuation of use

Physical dependence is characterized by withdrawal symptoms after abrupt drug discontinuation or a significant dose reduction of a drug. Individuals taking suprathreshold doses of testosterone may experience withdrawal symptoms lasting for weeks or months which include depressed mood, major depression, fatigue, craving, restlessness, irritability, anorexia, insomnia, decreased libido and hypogonadotropic hypogonadism.

Drug dependence in individuals using approved doses of testosterone for approved indications has not been documented.

10. OVERDOSAGE

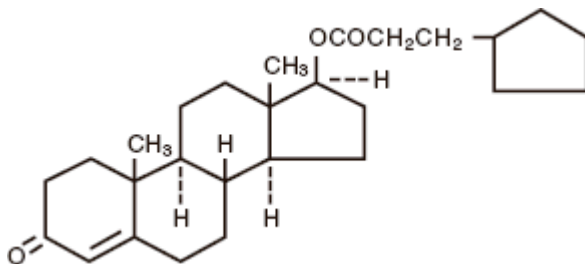
There is one report of acute overdosage with use of an approved injectable testosterone product: this subject had serum testosterone levels of up to 11,400 ng/dL with a cerebrovascular accident. Treatment of overdosage consists of discontinuation of Testosterone Cypionate Injection and appropriate symptomatic and supportive care.

11. DESCRIPTION

Testosterone Cypionate Injection, USP for intramuscular injection, contains testosterone cypionate which is the oil-soluble 17 (beta)-cyclopentylpropionate ester of the androgenic hormone testosterone.

Testosterone cypionate is a white or creamy white crystalline powder, odorless or nearly so and stable in air. It is insoluble in water, freely soluble in alcohol, chloroform, dioxane, ether, and soluble in vegetable oils.

The chemical name for testosterone cypionate is androst-4-en-3-one, 17-(3-cyclopentyl-1-oxopropoxy)-, (17 β)-. Its molecular formula is C₂₇H₄₀O₃, and the molecular weight 412.61. The structural formula is shown in the following figure:



Testosterone Cypionate Injection, USP is provided as sterile, clear colorless to pale yellow solution containing 200 mg/mL testosterone cypionate in vials.

Each mL of solution contains:

Testosterone cypionate.....	200 mg
Benzyl alcohol.....	20 mg
Benzyl benzoate.....	0.2 mL
Cottonseed oil.....	542 mg

12 CLINICAL PHARMACOLOGY

12.1 Mechanism of Action

Endogenous androgens, including testosterone and dihydrotestosterone (DHT), are responsible for normal growth and development of the male sex organs and for maintenance of secondary sex characteristics. These effects include growth and maturation of the prostate, seminal vesicles, penis, and scrotum; the development of male hair distribution, such as facial, pubic, chest, and axillary hair; laryngeal enlargement, vocal cord thickening, alterations in body musculature and fat distribution.

Male hypogonadism, a clinical syndrome resulting from insufficient secretion of testosterone, has two main etiologies. Primary hypogonadism is caused by defects of the gonads, such as Klinefelter's Syndrome or Leydig cell aplasia, whereas secondary hypogonadism is the failure of the hypothalamus (or pituitary) to produce sufficient gonadotropins (FSH, LH).

12.2 Pharmacodynamics

The exposure-response relationship and time course of pharmacodynamic response for the safety and effectiveness of testosterone have not been fully characterized.

12.3 Pharmacokinetics

Absorption

Testosterone esters are less polar than free testosterone. Testosterone esters in oil injected intramuscularly are absorbed slowly from the lipid phase; thus, testosterone cypionate can be given at intervals of two to four weeks.

Pharmacokinetic parameters of baseline-corrected testosterone obtained following a single-dose intramuscular administration of testosterone cypionate 200 mg in prefilled syringe in 26 hypogonadal adult males are summarized in Table 1 below.

Table 1: Mean (\pm SD) Baseline-corrected Testosterone Pharmacokinetic Parameters Following a Single-dose Intramuscular Administration of Testosterone Cypionate 200 mg in Hypogonadal Males (N=26)

Parameter	Mean (\pm SD)
AUC _{0-t} (hr·ng/dL)	137218.7 (\pm 62360.0)
C _{max} (ng/dL)	758.0 (\pm 288.7)
T _{max} (hr)	71.7 (24.0, 191.0) ^a

^a Reported in median (min, max).

Distribution

Circulating testosterone is primarily bound in serum to sex hormone-binding globulin (SHBG) and albumin. Approximately 40% of testosterone in plasma is bound to SHBG, 2% remains unbound (free) and the rest is bound to albumin and other proteins.

Elimination

The half-life of testosterone cypionate when injected intramuscularly is approximately eight days.

Metabolism

Inactivation of testosterone occurs primarily in the liver. Testosterone is metabolized to various 17-keto steroids through two different pathways. The major active metabolites of testosterone are dihydrotestosterone (DHT) and estradiol.

Excretion

About 90 percent of a dose of testosterone is excreted in the urine as glucuronic and sulfuric acid conjugates of testosterone and its metabolites. About 6 percent of a dose is excreted in the feces,

mostly in the unconjugated form.

13. NONCLINICAL TOXICOLOGY

13.1 Carcinogenesis, Mutagenesis, Impairment of Fertility

Carcinogenesis

Testosterone has been tested by subcutaneous injection and implantation in mice and rats. The implant induced cervical-uterine tumors in mice, which metastasized in some cases.

There is suggestive evidence that injection of testosterone into some strains of female mice increases their susceptibility to hepatoma. Testosterone is also known to increase the number of tumors and decrease the degree of differentiation of chemically induced carcinomas of the liver in rats.

Mutagenicity

Testosterone was negative in the *in vitro* Ames and in the *in vivo* mouse micronucleus assays.

Impairment of Fertility

The administration of exogenous testosterone suppresses spermatogenesis in the rat, dog and non-human primates, which was reversible on cessation of the treatment.

16 HOW SUPPLIED/STORAGE AND HANDLING

Testosterone Cypionate Injection is supplied as a sterile, clear colorless to pale yellow solution in single-dose vials as 200 mg/mL testosterone cypionate.

NDC Number	Package Size
71225-127-01	1 mL vials

Store at 15°C to 25°C (59°F to 77°F); excursions permitted to 2°C to 30°C (36°F to 86°F). Store product in carton to protect contents from light.

17 PATIENT COUNSELING INFORMATION

Polycythemia

Advise patients that Testosterone Cypionate Injection can cause an increase in hematocrit levels that may increase the risk of thromboembolic events. Advise patients about the importance of completing laboratory testing as instructed by their health care provider while on Testosterone Cypionate Injection [see *Warnings and Precautions* (5.1)].

Cardiovascular Risk

Advise patients that Testosterone Cypionate Injection may increase in the risk of major adverse cardiovascular events (MACE), including myocardial infarction, stroke, and cardiovascular death. [see *Warnings and Precautions* (5.2)].

Worsening of Benign Prostatic Hyperplasia (BPH) and Potential Risk of Prostate Cancer

Advise patients that Testosterone Cypionate Injection can cause increased symptoms of BPH and

can increase the risk for prostate cancer. Advise patients to contact their health care provider if they have any prostate-related symptoms [see *Warnings and Precautions (5.3)*].

Edema

Advise patients with preexisting cardiac, renal, or hepatic disease that Testosterone Cypionate Injection can cause edema. Advise patients to notify their health care provider if edema develops or worsens [see *Warnings and Precautions (5.9)*].

Sleep Apnea

Advise patients that Testosterone Cypionate Injection can worsen sleep apnea especially in patients with risk factors such as obesity or chronic lung diseases [see *Warnings and Precautions (5.10)*].

Gynecomastia

Advise patients that Testosterone Cypionate Injection can cause gynecomastia [see *Warnings and Precautions (5.11)*].

Manufactured for:
Slayback Pharma LLC,
Princeton, NJ 08540

Manufactured by:
LSNE-LEON SLU
Calle nicostrato vela
(pq. Tecnológico leon),
S/N – M1.1-M1.2, Leon, 24009,
Spain (ESP)

Revised:6/2022

MEDICATION GUIDE

Testosterone Cypionate (tes tos' ter one cy·p·i·onate) Injection injection, for intramuscular use, CIII

What is the most important information I should know about Testosterone Cypionate Injection?

Testosterone Cypionate Injection can cause serious side effects, including:

- **Increase in red blood cell counts (hematocrit) or hemoglobin.**
 - Testosterone Cypionate Injection increases red blood cell counts in some people. High red blood cell counts increase the risk of blood clots, strokes, and heart attacks.
 - You may need to stop Testosterone Cypionate Injection if your red blood cell count increases.
 - Your healthcare provider should check your red blood cell count and hemoglobin while you receive Testosterone Cypionate Injection.

What is Testosterone Cypionate Injection?

Testosterone Cypionate Injection is a prescription medicine that contains testosterone. Testosterone Cypionate Injection is used to treat adult men who have low or no testosterone due to certain medical conditions.

- It is not known if Testosterone Cypionate Injection is safe or effective to treat men who have low testosterone due to aging.
- It is not known if Testosterone Cypionate Injection is safe or effective in children younger than 12 years old. Improper use of testosterone may affect bone growth in children.
- Testosterone Cypionate Injection is a controlled substance (CIII) because it contains testosterone that can be a target for people who abuse prescription medicines. Selling or giving away this medicine may harm others and it is against the law.
- Testosterone Cypionate Injection is not meant for use in women.

Do not receive Testosterone Cypionate Injection if you:

- are allergic to Testosterone Cypionate Injection or to any ingredients in Testosterone Cypionate Injection. See the end of this Medication Guide for a complete list of ingredients in Testosterone Cypionate Injection.
- have breast cancer.
- have or might have prostate cancer.
- are a woman who is pregnant. Testosterone Cypionate Injection may harm your unborn baby.

What should I tell my healthcare provider before receiving Testosterone Cypionate Injection?

Before receiving Testosterone Cypionate Injection, tell your healthcare provider about all of your medical conditions including if you:

- have high red blood cell count (hematocrit) or high hemoglobin laboratory value.
- have breast cancer.
- have or might have prostate cancer.
- have urinary problems due to an enlarged prostate.
- have heart problems.
- have liver or kidney problems.
- have problems breathing while you sleep (sleep apnea).

Tell your healthcare provider about all the medicines you take, including prescription and over-the-counter medicines, vitamins, and herbal supplements. Using Testosterone Cypionate Injection with certain other medicines can affect each other. Especially, tell your healthcare provider if you take:

- insulin.
- medicines that decrease blood clotting (blood thinners).
- corticosteroids.

Ask your healthcare provider or pharmacist for a list of these medicines, if you are not sure. Know the medicines you take. Keep a list of your medicines and show them to your healthcare provider and pharmacist when you get a new medicine.

How will I receive Testosterone Cypionate Injection?

- Your healthcare provider will inject Testosterone Cypionate Injection deep into the muscle of your buttock.
- Your healthcare provider will test your blood before you receive and while you are receiving Testosterone Cypionate Injection.

What are the possible side effects of Testosterone Cypionate Injection?

Testosterone Cypionate Injection may cause serious side effects including:

See **“What is the most important information I should know about Testosterone Cypionate Injection?”**

- **Possible increased risk of heart attack or stroke that may or may not lead to death.**
- **If you already have an enlarged prostate, your signs and symptoms may worsen while receiving Testosterone Cypionate Injection.** This may include:
 - increased urination at night.
 - trouble starting your urine stream.
 - urinating many times during the day.
 - urge to go to the bathroom right away.
 - a urine accident.
 - inability to pass urine or weak urine flow.
- **Increased risk of prostate cancer.** Your healthcare provider should check you for prostate cancer or any other prostate problems before you start and while you receive Testosterone Cypionate Injection.
- **Blood clots in the legs or lungs.** Signs and symptoms of a blood clot in your leg can include leg pain, swelling or redness. Signs and symptoms of a blood clot in your lungs can include difficulty breathing or chest pain.
- **Abuse.** Testosterone can be abused, when taken at higher than prescribed doses and when used with other anabolic steroids. Abuse can cause serious heart and psychological side effects. Your healthcare provider should check you for signs of abuse before and during treatment with Testosterone Cypionate Injection.
- **Testosterone Cypionate Injection may lower your sperm count.**
- **Liver problems.** Symptoms of liver problems may include:
 - nausea or vomiting.
 - yellowing of your skin or whites of your eyes.
 - dark urine.
 - pain on the right side of your stomach area (abdominal pain).
- **Swelling of your ankles, feet, or body (edema), with or without heart failure.** This may cause serious problems for people who have heart, kidney or liver disease.
- **Breathing problems while you sleep (sleep apnea).**
- **Enlarged or painful breasts.**
- **Changes in certain blood tests.** These changes include changes in liver tests, increased calcium, decreased thyroid hormones, and increased prolactin hormones (hormone made by pituitary gland) levels.
- **Increased risk in children of bone growth problems.** Testosterone Cypionate Injection may affect a child's final adult height (stature). The child's bone growth should be checked every 6 months while they are receiving Testosterone Cypionate Injection.

Call your healthcare provider right away if you have any of the serious side effects listed above.

The most common side effects of Testosterone Cypionate Injection include:

- injection site reactions including: bruising, bleeding, redness, hardness.
- increased red blood cell count.
- enlarged or painful breasts.
- headache.
- depression.

Other side effects include more erections than are normal for you or erections that last a long time. Tell your healthcare provider if you have any side effect that bothers you or that does not go away.

These are not all the possible side effects of Testosterone Cypionate Injection. For more information, ask your healthcare provider or pharmacist.

Call your doctor for medical advice about side effects. You may report side effects to FDA at 1-800-FDA-1088.

General information about the safe and effective use of Testosterone Cypionate Injection.

Medicines are sometimes prescribed for purposes other than those listed in a Medication Guide. You can ask your pharmacist or healthcare provider for information about Testosterone Cypionate Injection that is written for healthcare professionals.

What are the ingredients in Testosterone Cypionate Injection?

Active ingredient: testosterone

Inactive ingredients: benzyl alcohol, benzyl benzoate and cottonseed oil.

Manufactured for:
Slayback Pharma LLC,
Princeton, NJ 08540

Manufactured by:
LSNE-LEON SLU
Calle nicostrato vela
(pq. Tecnológico leon),
S/N – M1.1-M1.2, Leon, 24009,
Spain (ESP)

This Medication Guide has been approved by the U.S. Food and Drug Administration.

Issued: 06/2022